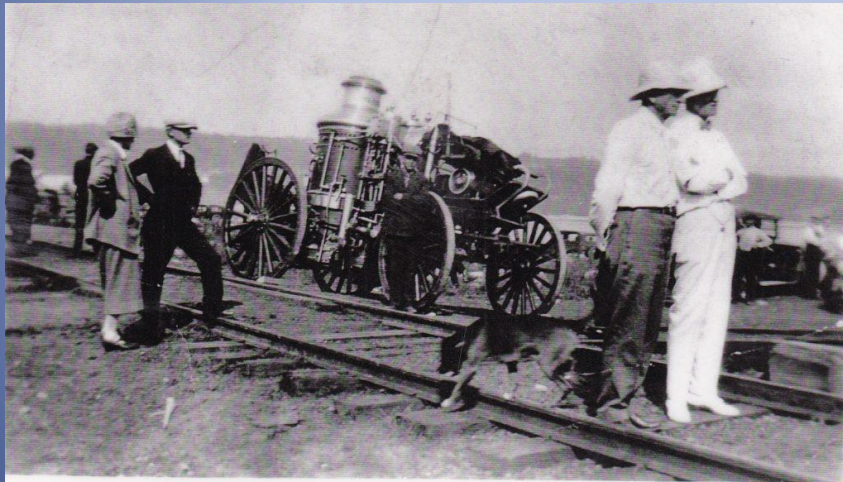


# TRAIL RECAPITALIZATION

Rick Muzyk, P.Eng

[rickmuzyk@eastlink.ca](mailto:rickmuzyk@eastlink.ca)



St. Margaret's Bay Area Rails To Trails  
Association



# TRAIL RECAPITALIZATION PRESENTATION OVERVIEW

History

Challenges

Recap Process

Key Messages



# TRAIL RECAPITALIZATION

## History

SMBARTA 1994

Active Greenway Trail

Original Construction

32.5 km

11 Bridges

8 communities

Late 1990's to  
early 2000's



# TRAIL RECAPITALIZATION CHALLENGES

Leadership

2015 Leadership  
Change

Trail Condition

Only reactive  
maintenance

Urgent Need Upgrade

No Reference Points



# TRAIL RECAPITALIZATION

## RECAP PROCESS

1. Define Assets



Trail Surface  
Bridge Deck

2. Condition



Good  
Fair  
Poor  
Critical

3. Timing for Renewal

Based on  
condition



# TRAIL RECAPITALIZATION RECAP PROCESS



4. Cost

Trail: \$20 k  
per km

Bridge: \$550  
per metre

5. Prioritize Projects

Condition  
Traffic volume

6. Duration of Plan

Success of  
funding



# TRAIL RECAPITALIZATION FUNDING

Identify Sources

Funding Schedule

Develop Relationships

Understand Criteria

Province  
Municipality  
Businesses  
Community  
Trusts



# TRAIL RECAPITALIZATION DESIGN AND CONSTRUCTION

Reasonable size  
projects  
Local Contractors

Scope

Fix Chronic Problems

Review Construction





# TRAIL RECAPITALIZATION

## SMBARTA 3 YEAR SUCCESS

Resurfaced 32.5 km

6 Bridge Decks

5 km Ditches

10 culverts

\$650,000



# TRAIL RECAPITALIZATION

## KEY MESSAGES

Plan

Build Relationships

Fix chronic problems

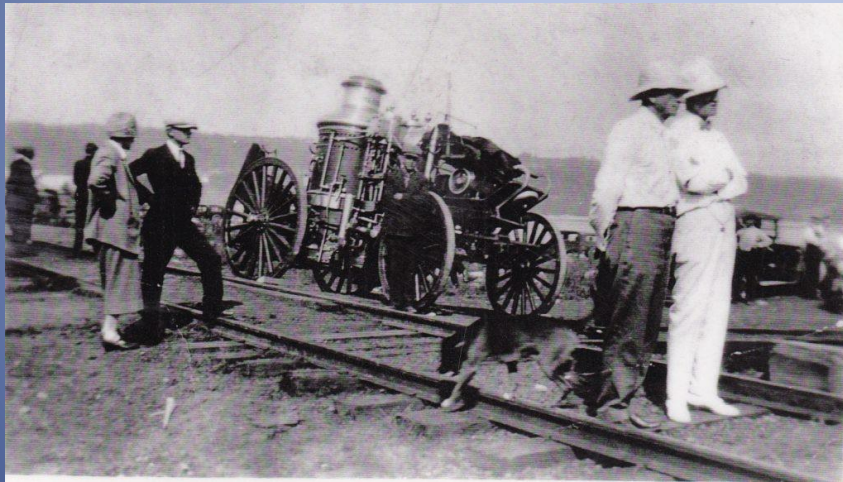
Maintenance Plan



# TRAIL RECAPITALIZATION

Rick Muzyk, P.Eng

rickmuzyk@eastlink.ca



St. Margaret's Bay Area Rails To Trails  
Association

